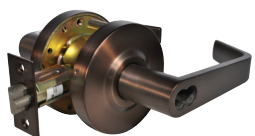


Overview

The 300 Series locks are designed for use in a variety of commercial applications. Equipped with a U.L. listed latchbolt, these locks can be used on 3-Hour fire doors. Built with independent return springs in each lever and with an optional clutch feature to protect against excessive torque, these levers resist sagging. The L-shaped lever design with less than 1/2" gap between the handle and the door meets most accessibility codes.



300MA26D SC2-3/4UL
Madison (MA)
Shown in 26D Finish



300LE10B IC2-3/4UL
Lexington (LE), SFIC
Shown in 10B Finish



310SO26D2-3/4UL
Sonoma (SO)
Shown in 26D Finish

Standard Features

- Certifications: ANSI/BHMA 156.2 Series 4000, Grade 2; Latch is UL Listed (USA and Canada) for 3-hour fire doors, included
- Latch: 2 3/4" Backset UL Listed Latch (sold with lock where indicated); 2 3/8" Backset available
- Handing: Non-Handed
- Materials: Zinc, Brass, Steel
- Strike: 4 7/8" x 1 1/4" ANSI full lip
- Door Prep: 2 1/8" diameter bore, 1" crossbore, Optional Through Bolt holes (2); 2 1/4" x 1 1/8" latch face
- Door Thickness: 1 3/8" - 1 3/4" standard; 1 7/8" - 2 1/4" Thick Door Lock
- Rose Diameter: 3.35"
- Keying:
 - Cylinders: Equipped with SC4 rekeyable 6-pin brass cylinders, compatible with LSDA Replacement C500 cylinders (See Page 75) and many other retrofit cylinders including most high security brands.
 - SFIC: Some models prepped for Small Format Interchangeable Core (SFIC), such as Best®, Falcon, KSP, Arrow®, 6- or 7-Pin
- Design:
 - Madison (MA), Step Rose Design
 - Lexington (LE), Flat Rose Design
 - Sonoma (SO), Flat Rose Curved Handle Design
- Functions (See last page)
 - Entrance/Office (300) and Entrance/Office with Clutch (C300)
 - Passage (310)
 - Privacy (320)
 - Exit (330)
 - Storeroom (340) and Storeroom with Clutch (C340)
 - Classroom (350) and Classroom with Clutch (C350)
 - Dummy (360)
- Benefits of a Clutch Lever: Clutch mechanism, or "free-wheeling" design offers an advantage over rigid locked leversets by reducing the torque applied to the outside lever
- ADA: The Americans With Disabilities Act (ADA) states that locks shall be operable with one hand and shall not require tight grasping, tight pinching or twisting of the wrist.

Entrance

Mfr.#	Desc.	EZ#
300MA3LLLC	Less Latch, Less Cyl.	090633
300MA10B LLLC	Less Latch, Less Cyl.	090636
300MA26LLLC	Less Latch, Less Cyl.	090639
300MA26D LLLC	Less Latch, Less Cyl.	090642
300MA10B IC/LL	SFIC, Less Latch, Less Cyl.	090637
300MA26D IC/LL	SFIC, Less Latch, Less Cyl.	090643
300MA3IC/LL	SFIC, Less Latch, Less Cyl.	090634
300LE3IC2-3/4UL	SFIC, With Latch, Less Cyl.	090125
300LE10B IC2-3/4UL	SFIC, With Latch, Less Cyl.	090126
300LE26D IC2-3/4UL	SFIC, With Latch, Less Cyl.	090127
300SO26D IC2-3/4UL	SFIC, With Latch, Less Cyl.	090130
300MA10B SC2-3/4UL	SC4 Kwy, With Latch	090638
300MA26D SC2-3/4UL	SC4 Kwy, With Latch	090644
300SO26D SC2-3/4UL	SC4 Kwy, With Latch	087933
300LE3SC2-3/4UL	SC4 Kwy, With Latch	087266
300LE10B SC2-3/4UL	SC4 Kwy, With Latch	087269
300LE26D SC2-3/4UL	SC4 Kwy, With Latch	087270
300LE26DSC2-3/4UL	SC4 Kwy, With Latch	087268
300LE26D SC2-3/4UL TD	SC4 Kwy, With Latch, Thick Door	180985

* Small Format Interchangeable Core (SFIC). Cylinder not included

Entrance with Clutch

Mfr.#	Desc.	EZ#
C300MA3LLLC	Less Latch, Less Cyl.	090645
C300MA10B LLLC	Less Latch, Less Cyl.	090648
C300MA26D LLLC	Less Latch, Less Cyl.	090654
C300MA26D IC/LL	SFIC, Less Latch, Less Cyl.	090655
C300LE3IC2-3/4UL	SFIC, Less Latch, Less Cyl.	090131
C300LE26D IC2-3/4UL	SFIC, With Latch, Less Cyl.	090133
C300LE10B IC2-3/4UL	SFIC, With Latch, Less Cyl.	090132
C300LE3SC2-3/4UL	SC4 Kwy, With Latch	087272
C300LE10B SC2-3/4UL	SC4 Kwy, With Latch	087275
C300LE26D SC2-3/4UL	SC4 Kwy, With Latch	087276
C300SO26D SC2-3/4UL	SC4 Kwy, With Latch	087939

Passage

Mfr.#	Desc.	EZ#
310MA3LL	Less Latch	090891
310MA26D LL	Less Latch	090894
310LE3 2-3/4UL	2 3/4" Latch	087278
310LE10B2-3/4UL	2 3/4" Latch	087281
310LE26D2-3/4UL	2 3/4" Latch	087282
310MA10B2-3/4UL	2 3/4" Latch	090706
310MA26 2-3/4UL	2 3/4" Latch	090707
310MA26D2-3/4UL	2 3/4" Latch	090708
310MA3 2-3/4UL	2 3/4" Latch	090705
310SO26D2-3/4UL	2 3/4" Latch	087945

Continued on the Next Page



Privacy

Mfr.#

Desc.

Knob & Lever Locks: 300 Series

EZ#

320MA3LL	Less Latch	090895
320MA10B LL	Less Latch	090896
320MA26D LL	Less Latch	090898
320LE3 2-3/4UL	2 ³ / ₄ " Latch	087284
320LE26D2-3/4UL	2 ³ / ₄ " Latch	087288
320LE10B2-3/4UL	2 ³ / ₄ " Latch	087287
320MA10B 2-3/4UL	2 ³ / ₄ " Latch	090710
320MA26 2-3/4UL	2 ³ / ₄ " Latch	090711
320MA26D 2-3/4UL	2 ³ / ₄ " Latch	090712
320MA3 2-3/4UL	2 ³ / ₄ " Latch	090709
320SO26D2-3/4UL	2 ³ / ₄ " Latch	087951

Exit

Mfr.#	Desc.	EZ#
330LE26D 2-3/4UL	Lexington	106939

Storeroom

Mfr.#	Desc.	EZ#
340MA3LLLC	Less Latch, Less Cyl.	090657
340MA10B LLLC	Less Latch, Less Cyl.	090660
340MA26LLLC	Less Latch, Less Cyl.	090663
340MA26D LLLC	Less Latch, Less Cyl.	090666
340LE3SC2-3/4UL	SC4 Kwy, With Latch	087290
340LE10B SC2-3/4UL	SC4 Kwy, With Latch	087293
340LE26D SC2-3/4UL	SC4 Kwy, With Latch	087294
340MA10B SC2-3/4UL	SC4 Kwy, With Latch	090662
340MA26D SC2-3/4UL	SC4 Kwy, With Latch	090668
340SO26D SC2-3/4UL	SC4 Kwy, With Latch	087957
340MA10B IC/LL	SFIC, Less Latch, Less Cyl.	090661
340MA26D IC/LL	SFIC, Less Latch, Less Cyl.	090667
340MA3IC/LL	SFIC, Less Latch, Less Cyl.	090658
340LE10B IC2-3/4UL	SFIC, With Latch, Less Cyl.	090138
340LE26D IC2-3/4UL	SFIC, With Latch, Less Cyl.	090139
340SO10B IC2-3/4UL	SFIC, With Latch, Less Cyl.	090141
340SO26D IC2-3/4UL	SFIC, With Latch, Less Cyl.	090142
340LE26D SC2-3/4UL TD	SC4 Kwy, With Latch, Thick Door	180986

Storeroom with Clutch

Mfr.#	Desc.	EZ#
C340MA3LLLC	Less Latch, Less Cyl.	090669
C340MA26D LLLC	Less Latch, Less Cyl.	090678
C340LE3IC2-3/4UL	SFIC, With Latch, Less Cyl.	090143
C340LE10B IC2-3/4UL	SFIC, With Latch, Less Cyl.	090144
C340LE26D IC2-3/4UL	SFIC, With Latch, Less Cyl.	090145
C340LE3SC2-3/4UL	SC4 Kwy, With Latch	087296
C340LE10B SC2-3/4UL	SC4 Kwy, With Latch	087299
C340LE26D SC2-3/4UL	SC4 Kwy, With Latch	087300

Classroom

Mfr.#	Desc.	EZ#
350MA3LLLC	Less Latch, Less Cyl.	090681
350MA10B LLLC	Less Latch, Less Cyl.	090684
350MA26D LLLC	Less Latch, Less Cyl.	090690
350MA26LLLC	Less Latch, Less Cyl.	090687
350MA26D IC/LL	SFIC, Less Latch, Less Cyl.	090691
350MA10B SC2-3/4UL	SC4 Kwy, With Latch	090686
350MA26D SC2-3/4UL	SC4 Kwy, With Latch	090692
350SO26D SC2-3/4UL	SC4 Kwy, With Latch	087971
350LE26D IC2-3/4UL	SFIC, With Latch, Less Cyl.	090151
350LE3SC2-3/4UL	SC4 Kwy, With Latch	087302
350LE10B SC2-3/4UL	SC4 Kwy, With Latch	087305
350LE26D SC2-3/4UL	SC4 Kwy, With Latch	087306

Classroom with Clutch

Mfr.#	Desc.	EZ#
C350MA26D LLLC	Less Latch, Less Cyl.	090702
C350LE10B IC2-3/4UL	SFIC, With Latch, Less Cyl.	090161
C350LE26D IC2-3/4UL	SFIC, With Latch, Less Cyl.	090162
C350LE10B SC2-3/4UL	SC4 Kwy, With Latch	090157
C350LE26D SC2-3/4UL	SC4 Kwy, With Latch	090158
C350LE3SC2-3/4UL	SC4 Kwy, With Latch	090155

Dummy

Mfr.#	Desc.	EZ#
360LE10B	Lexington	105605
360LE26D	Lexington	088358

Continued on Next Page



LSDA

Parts & Accessories

- 300CYL: Cylinder, SC4 Keyway
- 305UL: Springlatches, 2³/₈" Backset; UL Listed 3-Hour
- 314UL: Springlatches, 2³/₄" Backset; UL Listed 3-Hour
- 385UL: Deadlatches, 2³/₈" Backset; UL Listed 3-Hour
- 396UL: Deadlatches, 2³/₄" Backset; UL Listed 3-Hour
- LVRTP: Regular Cylinder Tailpiece
- SFICTP: Tailpiece for SFIC Levers
- T STRIKE: Strike

Cylinders

Mfr.#	Desc.	EZ#
300CYL3SC	SC4 Keyway	090729
300CYL26D SC	SC4 Keyway	090730

Springlatches, UL Listed 3-Hour

Mfr.#	Desc.	EZ#
305UL3	2 ³ / ₈ " Backset, UL 3-Hour	090725
305UL10B	2 ³ / ₈ " Backset, UL 3-Hour	090726
305UL26D	2 ³ / ₈ " Backset, UL 3-Hour	090728
314UL3	2 ³ / ₄ " Backset, UL 3-Hour	090717
314UL10B	2 ³ / ₄ " Backset, UL 3-Hour	090718
314UL26D	2 ³ / ₄ " Backset, UL 3-Hour	090720
314UL26	2 ³ / ₄ " Backset, UL 3-Hour	090719

Deadlatches, UL Listed 3-Hour

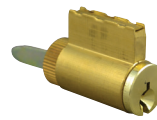
Mfr.#	Desc.	EZ#
385UL3	2 ³ / ₈ " Backset, UL 3-Hour	090721
385UL10B	2 ³ / ₈ " Backset, UL 3-Hour	090722
385UL26D	2 ³ / ₈ " Backset, UL 3-Hour	090724
385UL26	2 ³ / ₈ " Backset, UL 3-Hour	090723
396UL3	2 ³ / ₄ " Backset, UL 3-Hour	090713
396UL 10B	2 ³ / ₄ " Backset, UL 3-Hour	090714
396UL26D	2 ³ / ₄ " Backset, UL 3-Hour	090716

Tailpieces

Mfr.#	Desc.	EZ#
LVRTP	Regular Cyl., Tailpiece	009259
SFICTP300	Tailpiece, SFIC	101530
T STRIKE32D	T-Strike	066996

Functions:

- Entrance/Office (300) and Entrance/Office with Clutch (C300): Pushing and turning inside button locks outside lever requiring use of key until button is manually unlocked. Pushing inside button locks outside lever until unlocked with a key or inside lever is turned. Inside lever always retracts the latch.
- Passage (310): Both levers always retract the latch.
- Privacy (320): Pushing inside button locks outside lever until inside lever is turned. Emergency tool can be used to unlock outside lever. Inside lever always retracts the latch.



300CYL



305UL



314UL



385UL



396UL



LVRTP



SFICTP



T STRIKE

- Exit (330): Blank plate outside, inside lever always free
- Storeroom (340) and Storeroom with Clutch (C340): Outside lever never retracts the latch. Entrance by key only. Inside lever always retracts the latch.
- Classroom (350) and Classroom with Clutch (C350): Outside lever is locked and unlocked with a key in the outside cylinder. The inside lever always retracts the latch.
- Dummy (360): Pull only, one side of door trim.