

### Overview:

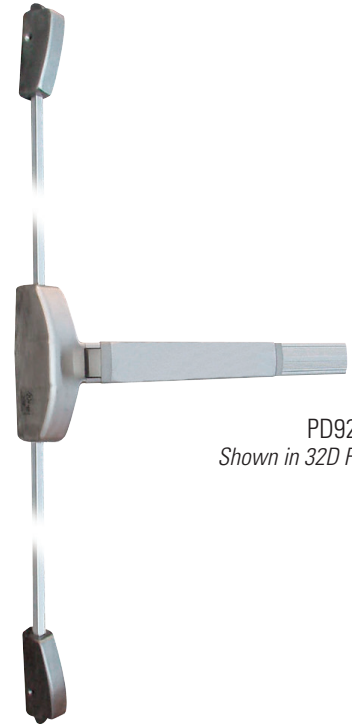
The PD9200 Series are heavy-duty exit devices for the most demanding doors. Available as Rim Panic-Rated (PD9200R), Surface Vertical Rod Panic-Rated (PD9200V), Rim Fire-Rated (PDF9200R), and Surface Vertical Rod Fire-Rated (PDF9200V). These devices are recommended for use on exterior and interior out-swinging doors. Typical applications include Hospitals, Office Spaces, Schools, Industrial Sites, Government Buildings, and Places of Assembly.

### Standard Features:

- Certifications:
  - PD9200: ANSI/BHMA A156.3 2008 Grade 1, UL listed Panic Hardware
  - PDF9200: ANSI/BHMA A156.3 2008 Grade 1, UL10C fire-rated exit hardware, UL305 and UBC7-2, 3-Hour
- Latch:
  - Rim: Deadlocking latch, stainless steel  $\frac{3}{4}$ " throw
  - Vertical Rod: Top latch is stainless steel  $\frac{5}{8}$ " throw, deadlocking pullman type; Bottom latch is panic-rated stainless steel  $\frac{5}{8}$ " throw, deadlocking pullman type. Fire-rated version has round slide bolt). Easy latch adjustment for vertical rods.
- Sizes: 36" (33" actual length; can be cut back to 27" from head cover to end cap) or 48" (45" actual length; can be cut back to 33" from head cover to end cap)
- Handing: Non-Handed
- Materials: Stainless Steel, Brass, Extruded Aluminum
- Strike: For Rim, surface applied (double door strike available); For Vertical Rod Strikes, surface applied top, mortise required for bottom strike
- Door Types: Commercial wood and hollow metal
- Door Prep: Surface application, plus trim prep; Door height for Vertical Rod is standard 7'0" with optional top rod set for 8'0" and extensions available for up to 10'0". Top and bottom rods have vertical adjusters in the center case.
- Dogging: Standard dogging by key provided or  $\frac{5}{32}$  hex wrench; Cylinder dogging option available (Requires a  $1\frac{3}{4}$ " Mortise Cylinder with Cloverleaf Cam); Fire-Rated Devices cannot be dogged per the Fire Code.
- Door Thickness:  $1\frac{3}{4}$ " -  $2\frac{1}{4}$ "
- Stile Width: Minimum  $2\frac{7}{8}$ "
- Projection:  $3\frac{13}{16}$ "
- Keying: Outside trims use conventional mortise or rim cylinders



PD9200R  
Shown in 32D Finish



PD9200V  
Shown in 32D Finish

### Rim Exit Device

Mfr.#	Desc.	EZ#
PD9200R630S48	Rim, 48"	103537
PD9200R613S36	Rim, 36"	107908
PD9200R630S36	Rim, 36"	102936
PDF9200R613S36	Rim, 36", Fire Rated	107910
PDF9200R630S36	Rim, 36", Fire Rated	103991
PDF9200R630S48	Rim, 48", Fire Rated	103992

### Vertical Rod Exit Device

Mfr.#	Desc.	EZ#
PD9200V630S36	Vertical Rod, 36"	102937
PD9200V613S36	Vertical Rod, 36"	107909
PDF9200V630S36	Vertical Rod, Fire Rated, 36"	103993



Panic: SA7474  
Fire: R26113



## Exit Devices, PD9200 Series (Mechanical)

### Parts & Accessories (Mechanical)

- PDT21RV: Exit Trim, Lever Escutcheon, Passage Function, Size: 11" x 2.75"
- PDT22RV: Exit Trim, Nightlatch Function, Pull Plate, uses Rim Cylinders; UL Listed for Fire Doors; Size: 14.25" x 3"
- PDT23RV: Exit Trim, Thumb Piece, uses Rim Cylinder for Classroom Function; UL Listed for Fire Doors; Size: 14.25" x 3"
- PDT26RV: Exit Trim, Lever Escutcheon, uses Mortise Cylinder for Classroom Function, Break-away cam; Size: 11" x 2.75"
- PDT27RV: Exit Trim, Lever Night Latch; Size: 11" x 2.75"
- PDSVTR8: Exit Device Service Kit for 8' Door
- PDSVT EXT: Exit Device Service Kit for 10' Door
- PDCDKIT36: Exit Device Cylinder Dogging Kit, 1 1/4" Mortise, Less Cylinder
- PD92ALK: Alarm Kit for PD9200, 36" Exit Device
- PD92V LATCH: Set of Top and Bottom Latches, for PD9200V
- PDKEY: Dogging Key
- PD DDS: Double Door Strike, black finish
- PDDOG: Dogging Assembly
- PDCAM: Breakable Cam, for lever trims
- PD26SC: Spring Cassette for PDT26
- PDROD8: Upper Rod for PD920V

Mfr.#	Desc.	EZ#
<b>PDT21RV626</b>	Exit Trim, Passage Lever	<b>109439</b>
<b>PDT22RV613</b>	Exit Trim, Nightlatch, Pull Plate	<b>107911</b>
<b>PDT22RV630</b>	Exit Trim, Nightlatch, Pull Plate	<b>102938</b>
<b>PDT23RV613</b>	Exit Trim, Thumb Piece, Class	<b>107912</b>
<b>PDT23RV630</b>	Exit Trim, Thumb Piece, Class	<b>103533</b>
<b>PDT26RV613</b>	Exit Trim, Lever Escut., Class	<b>107854</b>
<b>PDT26RV626</b>	Exit Trim, Lever Escut., Class	<b>102939</b>
<b>PDT27RV626</b>	Exit Trim, Lever Night Latch	<b>103921</b>
<b>PD92VBR26D</b>	Bottom Rod, f/PD9200V	<b>182266</b>
<b>PDSVTR8 626</b>	Service Kit f/8' Door	<b>103531</b>
<b>PDSVT EXT626</b>	Service Kit f/10' Door	<b>103532</b>
<b>PDCDKIT36 626</b>	Cylinder Dogging Kit, LC	<b>103530</b>
<b>PD92ALK36SS</b>	Alarm Kit f/PD9200	<b>108263</b>
<b>PDKEY</b>	Dogging Key	<b>108699</b>
<b>PD DDS BLK</b>	Double Door Strike	<b>103536</b>
<b>PDDOG</b>	Dogging Assembly	<b>106499</b>
<b>PDCAM</b>	Breakable Cam	<b>103535</b>
<b>PDEXT303 613</b>	Vertical Rod Ext., 303mm	<b>108700</b>
<b>PDEXT912 613</b>	Vertical Rod Ext., 912mm	<b>108701</b>
<b>PD92V LATCH</b>	Top & Bottom Latches	<b>108021</b>
<b>PD26SC</b>	Spring Cassette	<b>108906</b>



PDT21RV



PDT22RV



PDT23RV



PDT26RV



PDT27RV



PD92VBR



PDSVTR8



PDSVT EXT



PDCDKIT36



PD92ALK36



PD92V LATCH



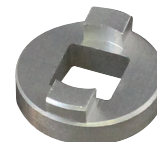
PDKEY



PD DDS



PDDOG



PDCAM



PD26SC