

#### Overview

BMAG electro-magnetic locks secure doors and gates with 600 pounds or 1200 pounds of holding force and no moving parts. Locks require 12 Volt or 24 Volt DC power and one or more external switching devices to interrupt current and unlock the opening. All models are inherently "fail-safe".

Interior lock models have extra built in features such as an unlock delay timer, magnetic bond sensor with status LED and form C relay output. These are suitable for interior and exterior doors, but should not be mounted in wet locations.

Weatherproof models are sealed to keep moisture out. They have a threaded conduit fitting for applications where you need to attach a raceway to protect the wiring. WP models have a bond sensor and can be top-mounted or face-mounted. These are commonly used on exterior gates.

#### Standard Features:

- **Certifications:** LSDA BMAGs are U.L. Listed as Auxiliary Locks and as Releasing Devices
- **Holding Force:** 600 pounds or 1200 pounds, depending on model
- **Handing:** Non-Handed
- **Materials:** Steel, stainless steel and aluminum
- **Voltage:** 12V DC or 24V DC
- **Power:** All single opening locks are 500mA @ 12VDC and 250mA @ 24VDC. Double door magnet (BMAG1200D) is 1000mA @ 12VDC and 500mA @ 24VDC
- **Lock Mounting Types:** Interior surface mount locks, fasten from bottom to top. Interior mortise mount lock (BMAG600M) fasten from front to back. Weatherproof models have 2 ways to fasten, bottom to top or front to back
- **Dimensions:**
  - BMAG600: 9.9" x 1.9" x 1.0"
  - BMAG600M: 9.0" x 1.5" x 1.0"
  - BMAG600WP C: 7.99" x 1.73" x 1.54"
  - BMAG1200: 10.5" x 2.9" x 1.6"
  - BMAG1200D: 21.0" x 2.9" x 1.6"
  - BMAG1200WP C: 9.06" x 2.48" x 1.57"



BMAG600  
600 lbs. Holding Force  
Aluminum Finish



BMAG600M  
600 lbs. Holding Force  
Aluminum Finish



BMAG600BLK  
600 lbs. Holding Force  
Black Finish



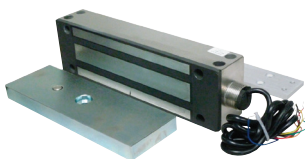
BMAG600WP C  
600 lbs. Holding Force  
Weatherproof, Aluminum Finish



BMAG1200  
1200 lbs. Holding Force  
Aluminum Finish



BMAG1200D  
1200 lbs. Holding Force  
Aluminum Finish



BMAG1200WP C  
1200 lbs. Holding Force  
Weatherproof, Aluminum Finish

Mfr.#	Desc.	EZ#
<b>BMAG600</b>	600 lbs, standard	<b>090465</b>
<b>BMAG600BLK</b>	600 lbs, standard, Black	<b>102306</b>
<b>BMAG600M</b>	600 lbs, Mortise Lock Mount	<b>090466</b>
<b>BMAG600WP C</b>	600 lbs, Weatherproof	<b>180582</b>
<b>BMAG1200</b>	1200 lbs, standard	<b>090467</b>
<b>BMAG1200D</b>	1200 lbs, Double Door	<b>090468</b>
<b>BMAG1200WP C</b>	1200 lbs, Weatherproof	<b>180583</b>



S24524

# Electronic Access Control, Electro-Magnetic Locks

## Parts & Accessories

- PDEPT: Power Transfer
- PDPS12/24: Boxed Power Supply, 12/24V DC, 4/2 Amp
- PDBB: Battery Back-up, Batteries & Charger for PDPS Power Supply
- PDFA: Fire Alarm Interface for PDPS Power Supply
- BZB600: Z Bracket, 600 lb Mag Locks, Inswing Doors
- BZB1200: Z Bracket, 1200 lb Mag Locks, Inswing Doors
- BGDB612: Glass Door Bracket for 600 lb & 1200 lb Mag Locks
- CAPSBSB: Replacement End Caps for BSB Exit Bar
- BSB: Exit Sensor Bar, Used to Cut Off Power to Magnetic Lock to Allow for Egress; 34"L x 2.76"W x 2.24"D; Bar motion to activate switches is less than 0.5"; non-handed
- BSFP: Filler Plate for 1200 lb Mag Locks
- 1200APS: Armature Plate for 1200 lb Mag Locks

Mfr.#	Desc.	EZ#
<b>PDEPT</b>	Electrical Power Transfer	<b>107044</b>
<b>PDPS12/24</b>	Boxed Power Supply	<b>107045</b>
<b>PDBB</b>	Battery Backup, batteries	<b>107047</b>
<b>PDFA</b>	Fire Alarm Interface f/PDPS	<b>107048</b>
<b>BZB600</b>	Z Bracket, Inswing Door	<b>100683</b>
<b>BZB1200</b>	Z Bracket, Inswing Door	<b>090470</b>
<b>BGDB612</b>	Glass Door Bracket	<b>107520</b>
<b>CAPSBSB</b>	Replacement End Caps f/BSB	<b>104058</b>
<b>BSB36D628</b>	Electric Exit Device, Alum	<b>090471</b>
<b>BSB36D BLK</b>	Electric Exit Device, Black	<b>100682</b>
<b>BSB48D BLK</b>	Electric Exit Device, Black	<b>101555</b>
<b>BSB48D628</b>	Electric Exit Device, Alum	<b>101554</b>
<b>BSFP12</b>	1/2" Filler Plate, f/1200 lb Mag	<b>102308</b>

