



Electronic Pushbutton Locks

EL730SLR

USER'S GUIDE

◀ SECURITY • TECHNOLOGY ▶



IMPORTANT SAFETY INSTRUCTION



1. To prevent damage to the finish, DO NOT use any abrasives, sharp objects or harsh chemical products containing alcohol, petroleum solvents, acids or acetone to clean this lockset.
2. To prevent damage to the sensitive electronic components, DO NOT allow any liquids to enter lockset while installing or cleaning.

CAUTION

1. Do not attempt to disassemble any internal components of this lockset as this WILL void the limited warranty.
2. Do not drop or hit /strike the lockset as excessive shock may result in permanent damage.
3. Do not use sharp objects to press key buttons.
4. It is Strongly recommended that you always create a written backup of the programming code and individual user codes. Please use the last page of this booklet as your reference.
5. For your Security, please remember to change this lockset's factory default programming code to a PERSONAL programming code prior to normal day to day use of this product.
6. It is STRONGLY recommended that you use only ALKALINE BATTERIES to operate this product.



Electronic Pushbutton Locks

EL730SLR

INSTRUCTIONS IMPORTANTES DE SECURITÉ



1. N'utilisez pas de produits abrasifs ou de produits chimiques contenant de l'alcool, du benzène, de l'acide chlorhydrique ou de l'acide nitrique, et évitez d'utiliser des objets tranchants ou abrasifs pour nettoyer cette serrure.
2. Ne laissez pas l'eau ou un liquide dans la serrure pendant le processus d'installation.



1. Ne tentez pas de démonter vous-mêmes les composants internes de la serrure. Vous courez le risque d'annuler la garantie limitée.
2. Ne laissez pas tomber la serrure. Un grand choc pourrait causer des dommages permanents.
3. N'utilisez pas des épingles ou des objets tranchants pour appuyer sur le clavier.
4. Créez toujours une copie de sauvegarde des informations que vous souhaitez conserver (telles que le code de programmation et les codes d'utilisateur). Veuillez utiliser la dernière page de ce manuel comme référence.
5. Veuillez changer le code de programmation avant d'utiliser cette serrure.
6. Il est fortement recommandé que vous utilisiez uniquement des piles alcalines pour utiliser ce produit.

01B

CONTENTS

MAIN OPERATING INSTRUCTIONS	03
PROGRAMMING CODE AND USER CODE	05
COMPONENTS	06
INSTALLATION INSTRUCTIONS	08
SETUP MODE	
01. HOW TO CHANGE PROGRAMMING CODE	25
02. HOW TO ADD AN USER CODE	26
03. HOW TO ADD A PROXIMITY CARD (RFID)	27
04. HOW TO ADD A REMOTE CONTROL (RADIO FREQUENCY, RF)	28
05. HOW TO ADD A SINGLE-USE USER CODE/ PROXIMITY CARD/ REMOTE CONTROL	29
06. HOW TO DELETE AN INDIVIDUAL EXISTING USER CODE	31
07. HOW TO DELETE AN INDIVIDUAL EXISTING PROXIMITY CARD	32
08. HOW TO DELETE AN INDIVIDUAL EXISTING REMOTE CONTROL	33
09. HOW TO DELETE ALL EXISTING USER CODES AT ONCE	34
10. HOW TO DELETE ALL EXISTING PROXIMITY CARDS/ REMOTE CONTROLS AT ONCE	35

02A



Electronic Pushbutton Locks

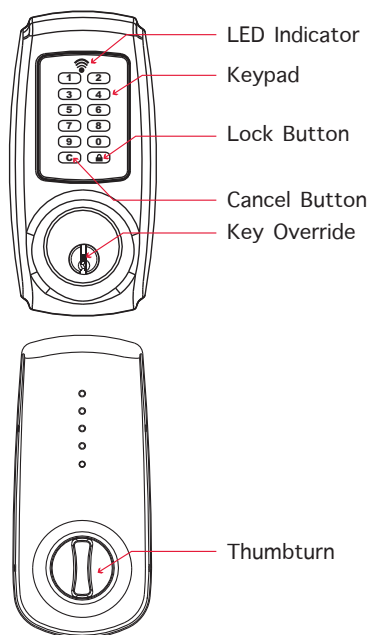
EL730SLR

CONTENTS

11. HOW TO DISABLE ALL EXISTING USER CODES / PROXIMITY CARDS / REMOTE CONTROLS (VACATION MODE)	36
12. HOW TO DISABLE BUTTON SOUND (MUTE MODE)	37
13. HOW TO ENABLE AUTO-LOCK MODE	38
14. HOW TO SETUP AUTO-LOCK TIME DELAY	39
15. HOW TO ENABLE DOUBLE AUTHORIZATION MODE	40
16. HOW TO RESTORE FACTORY SETTING	41
17. HOW TO REPLACE A BATTERY OF REMOTE CONTROL	42
OPERATION MODE	
01. HOW TO LOCK (i.e. TO ENABLE AUTO-LOCK)	43
02. HOW TO UNLOCK	44
03. SAFE MODE	45
TROUBLESHOOTING GUIDELINE	46
DECLARATIONS AND SAFETY STATEMENTS	51
DATA RECORDS	52

02B

MAIN OPERATING INSTRUCTIONS



This manual is intended for both Proximity Card Electronic Deadbolt and Remote Control Electronic Deadbolt.



Any description which is related to proximity card (RFID technology) can only be applied on Proximity Card Electronic Deadbolt.

Any description which is related to remote controller (RF technology) can only be applied on Remote Control Electronic Deadbolt.

LED Indicator

1. Green light: Code entered is valid.
 2. Red light: Code entered is invalid / Under setup mode.
 3. Yellow light: Low battery warning.
- ※ All batteries should be replaced if yellow light flashes.

Keypad

1. To unlock the lockset by entering a valid code.
2. To program the lockset.
3. When mis-typing codes during any process, press Cancel Button  to cancel the wrong codes and re-enter the correct codes if the yellow light is on or keeps flashing.
4. To lock the lockset by pressing Lock Button .

Key Override

To unlock the lockset by a valid key.

Thumbturn

To lock or unlock the lockset manually.

03



Electronic Pushbutton Locks

EL730SLR

MAIN OPERATING INSTRUCTIONS

Inductive Zone & RFID Card :

(only available for Proximity Card Electronic Deadbolt)

1. Inductive zone is around the keypad.
2. The proximity card we offer is the latest Radio Frequency Identification (RFID) technology, compatible with standard Mifare -13.56 MHz.
3. Unlock the door by touching the inductive zone with the proximity card.

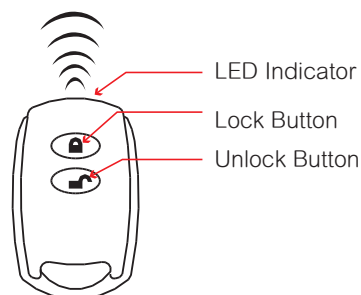


Remote Control :

(Radio Frequency, RF)

(only available for Remote Control Electronic Deadbolt)

1. There is one unlock button and one lock button on the remote control.
2. Effective range of the controller is designed to be within 15 meters (50 feet). However, the range could be affected by ambient temperature and humidity.
3. The LED light of the remote control will be turned on when holding the Lock Button for over 3 seconds.



04

PROGRAMMING CODE AND USER CODE

PROGRAMMING CODE

1. Only one programming code will be allowed. The lockset can be programmed only by entering the programming code.
2. A programming code is restricted to 6-digits in length only.
The pre-set programming code is 1-2-3-4-5-6 (factory setting).
Please change it before operating the lockset.
3. The programming code can be used to unlock the lockset.

USER CODE

1. A user code can be from four (4) to six (6) digits in length.
2. A user code can be changed (added or deleted) by accessing the setup mode.
3. The lockset cannot be programmed by entering any of the user codes.
4. The lockset will be unlocked by entering one user code.

Note:

User code capacity: 10 sets maximum.

Proximity card capacity: 10 sets maximum.

Remote control capacity: 10 sets maximum.

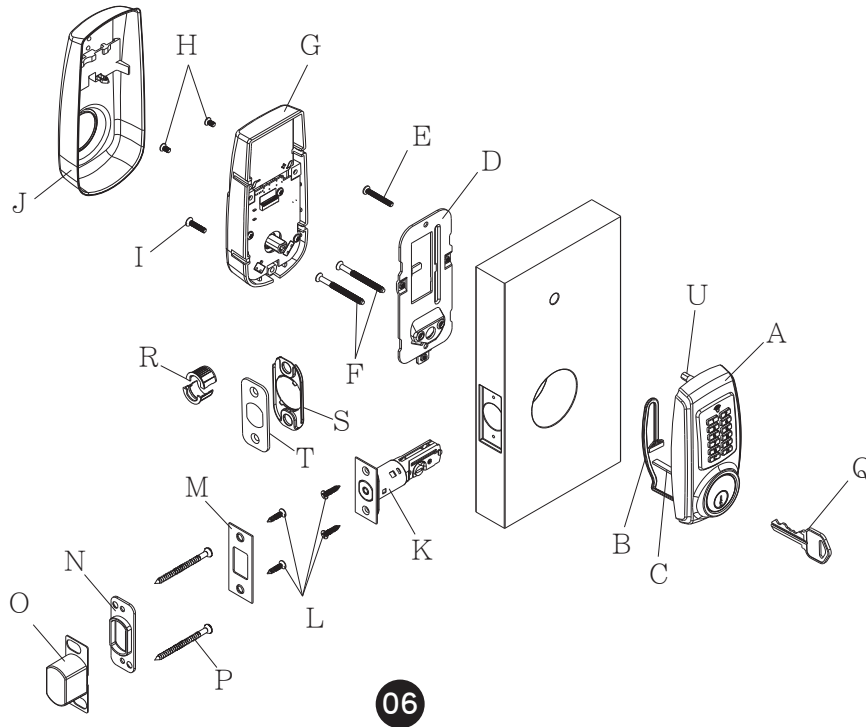
05



Electronic Pushbutton Locks

EL730SLR

COMPONENTS



COMPONENTS

A. Exterior Assembly

B. Cable

C. Tailpiece

D. Mounting Plate

E. 1-1/4" (32mm) Screw (1)



F. 2-1/8" (54mm) Mounting Bolt (2)



G. Interior Assembly

H. 5/16" (7.8mm) Screw (2)



I. 13/16" (20mm) Screw (1)



J. Decorative Cover

K. Adjustable Latch

(Square or radius faceplate or drive-in)

L. 6/8" (19mm) Wood Screw (4)



M. Strike Plate

N. Reinforced Strike Plate

O. Dust Box

P. 3" (76mm) Wood Screw (2)

Q. Key (2)

R. Drive in Collar (Optional)

S. Bottom Plate (Optional)

T. Square or Radius Faceplate (Optional)

U. Screw post

07



Electronic Pushbutton Locks

EL730SLR

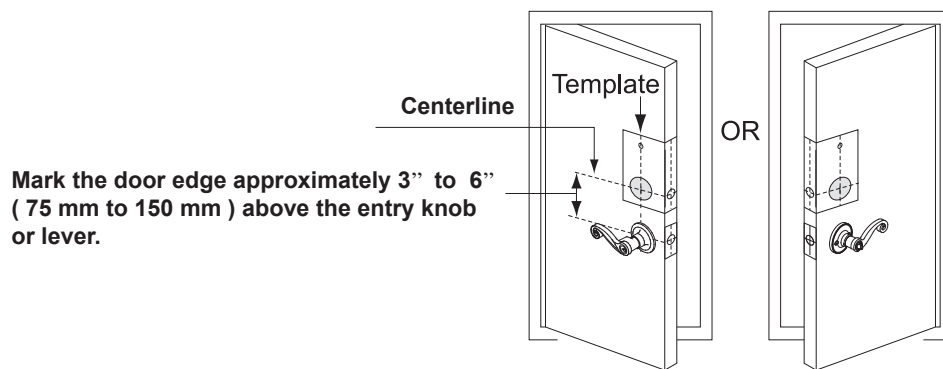
INSTALLATION INSTRUCTIONS

1 Mark the Door with a Template Sheet (attached separately)

Note: If the door is pre-drilled, please begin with page 13.

a. Use TEMPLATE to mark centerline on door for deadbolt about 3" to 6" (75 mm to 150 mm) above the existing knob or lever.

b. Stand so door swings towards you. Align template on centerline and fold template as shown.

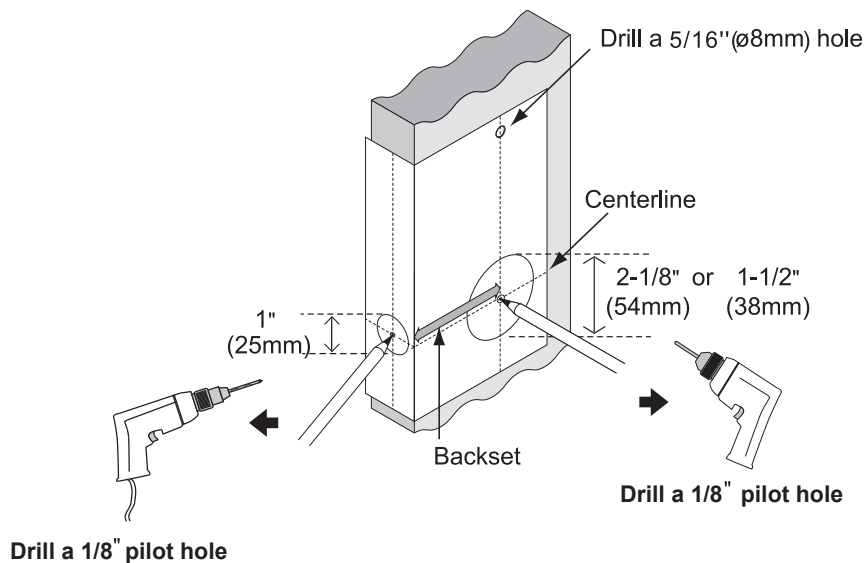


08

INSTALLATION INSTRUCTIONS

2 DRILL PILOT HOLES

Select a backset. Mark and drill pilot holes as shown below.



09



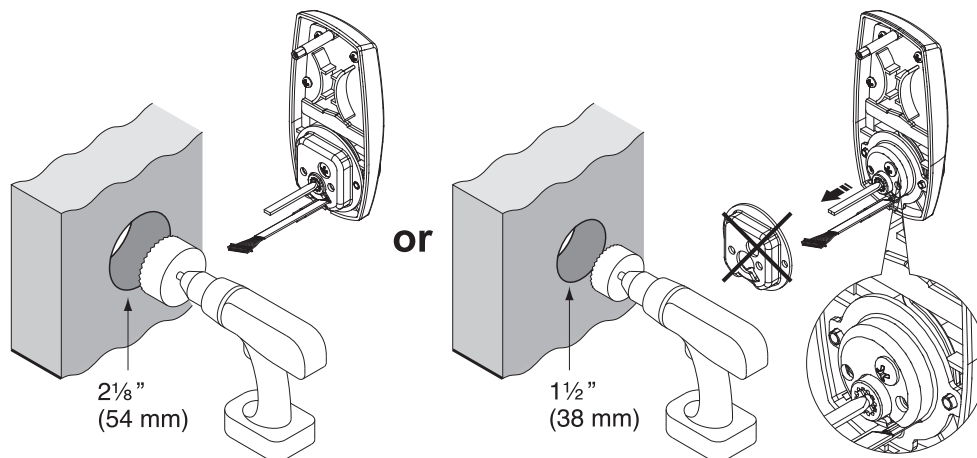
Electronic Pushbutton Locks

EL730SLR

INSTALLATION INSTRUCTIONS

3-1 DRILL HOLES

- a. Drill a 2-1/8" (54 mm) or 1-1/2" (38 mm) hole on the door face from both sides to avoid wood splitting.

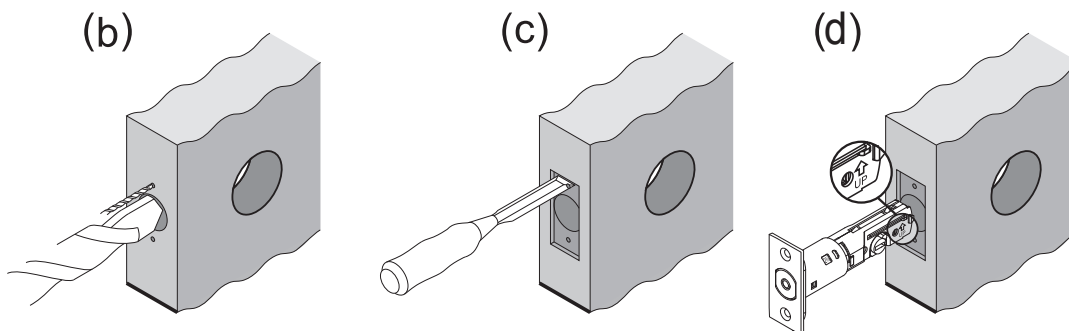


10

INSTALLATION INSTRUCTIONS

3-2 DRILL HOLES

- b. Drill a 1" (25 mm) hole on the door edge for the latch.
c. Use the faceplate as a template for mortise and pilot holes. Chisel 1/8" (3 mm) deep.
Faceplate should fit flush.
d. Install the appropriate latch type as shown below.



Note: For a drive-in latch, please refer to page 14.

11



Electronic Pushbutton Locks

EL730SLR

INSTALLATION INSTRUCTIONS

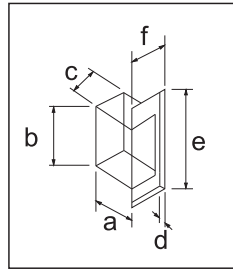
4 PREPARE DOOR JAMB AND INSTALL STRIKE PLATE

Door jamb hole dimension

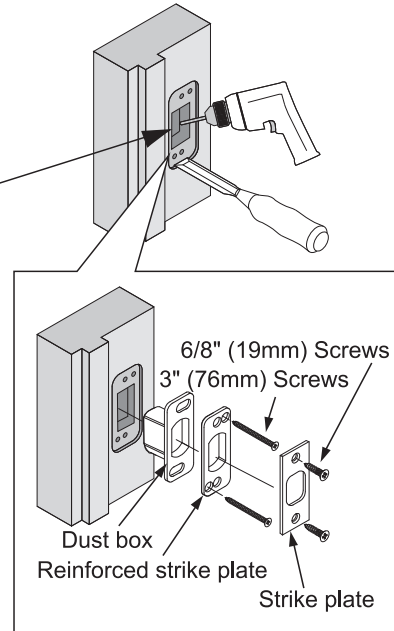
- a. 1-3/16" (30mm)
- b. 1-9/16" (40mm)
- c. 1" (25mm)

Strike dimension

- d. 5/32" (4mm)
- e. 2-3/4" (70mm)
- f. 1-1/8" (28mm)



Note: The dust box and reinforced strike plate are optional. It is recommended to install both of them for maximum security.

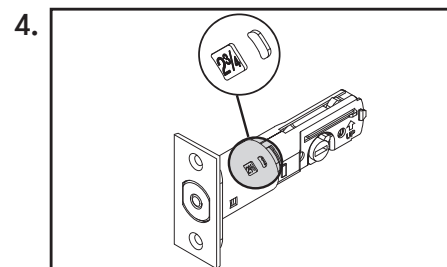
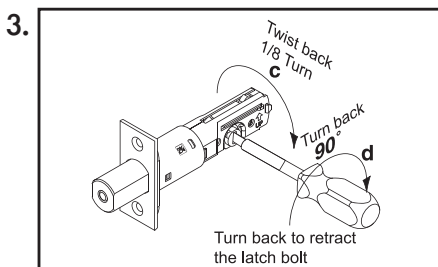
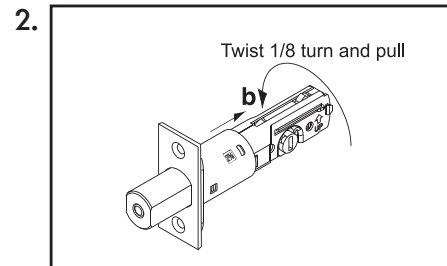
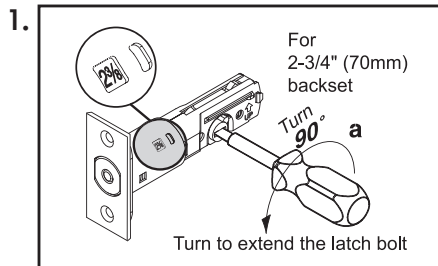


12

INSTALLATION INSTRUCTIONS

1A LATCH BACKSET ADJUSTMENT

Latch backset adjustment only needs to be made if your door needs a 2-3/4" (70 mm) backset. Please follow diagrams below as reference.
(Skip this if your door has a 2-3/8" (60 mm) backset)



13



Electronic Pushbutton Locks

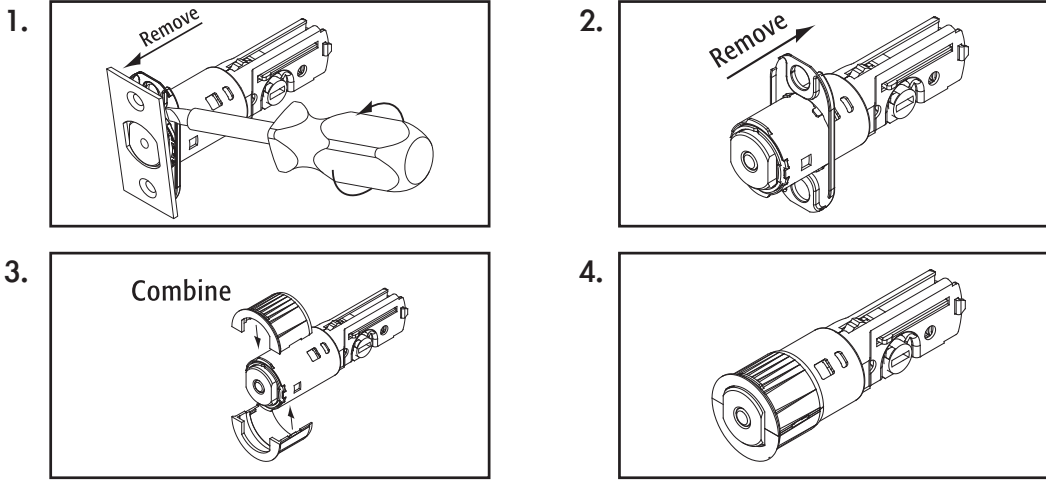
EL730SLR

INSTALLATION INSTRUCTIONS

1B DRIVE-IN COLLAR or FACEPLATE ADJUSTMENT

In addition to 2-3/8" (60 mm) or 2-3/4" (70 mm) adjustable backset, you may change the faceplate to drive-in collar.

(If your door is not a drive-in latch type, please skip this step.)



Note: Reverse the above steps if you need to change the drive-in collar to the faceplate.

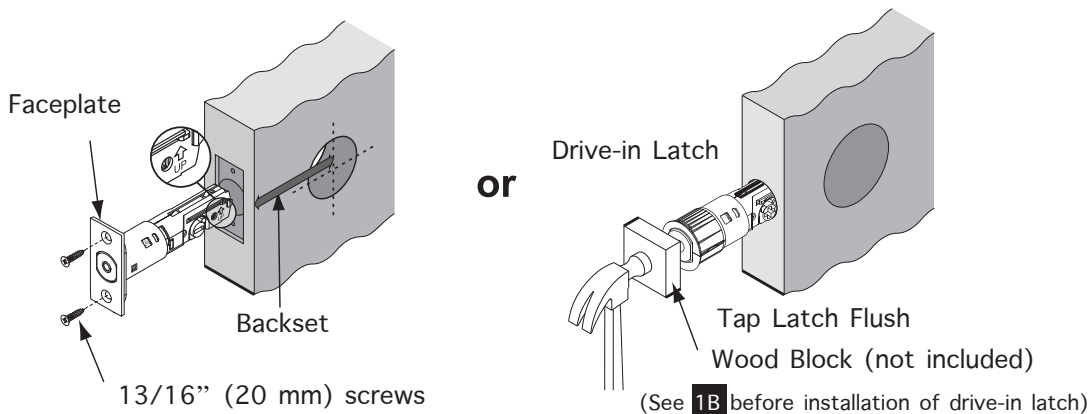
14

INSTALLATION INSTRUCTIONS

2 INSTALL LATCH IN MORTISED AREA OR INSTALL DRIVE-IN LATCH

If the door is designed for a standard type latch, please install the latch with 13/16" (20mm) screws provided.

If a drive-in latch is used, please tap it into the appropriate position.



Note: Make sure that the latch moves into and out of the strike plate smoothly. This lock has a motorized bolt and must not drag or bind when moving.

15

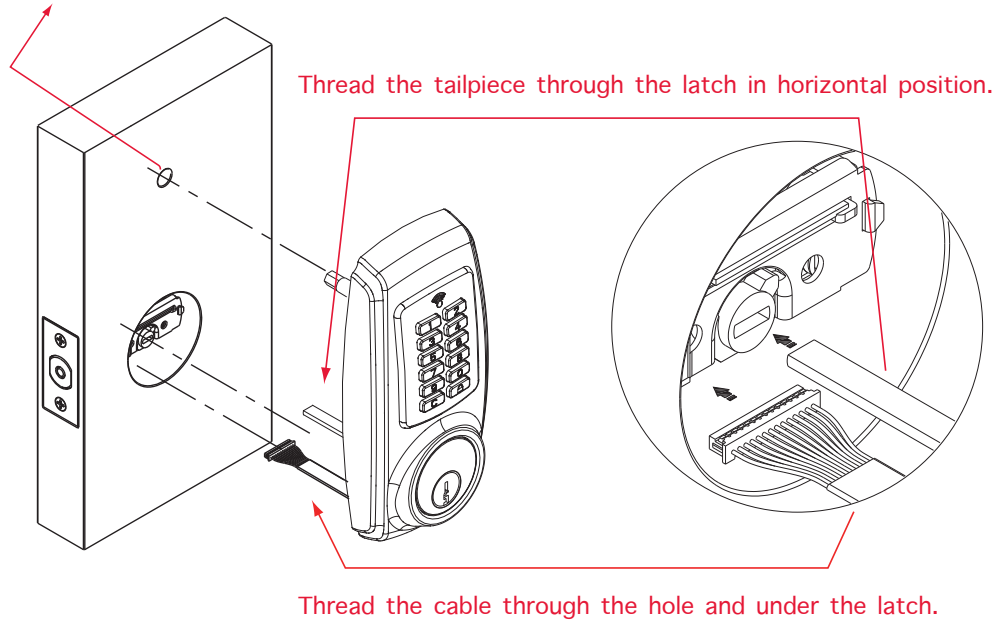


Electronic Pushbutton Locks

EL730SLR

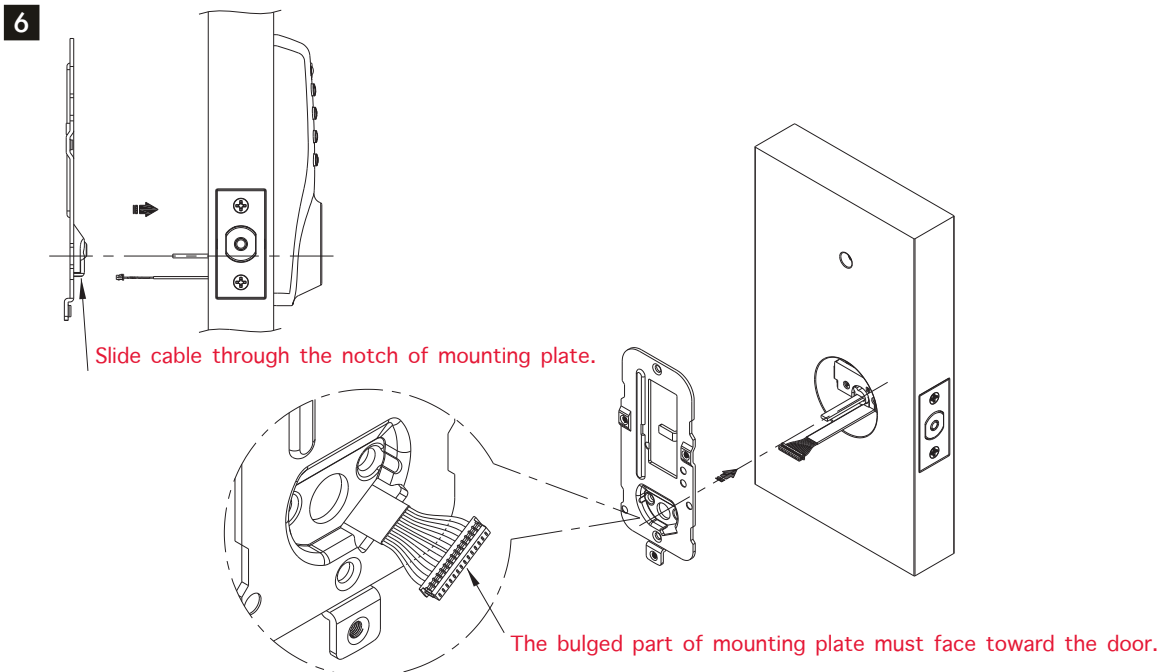
INSTALLATION INSTRUCTIONS

- 5 Drill a 5/16" (Ø 8mm) hole on the door when the screw post is installed.



16

INSTALLATION INSTRUCTIONS



17



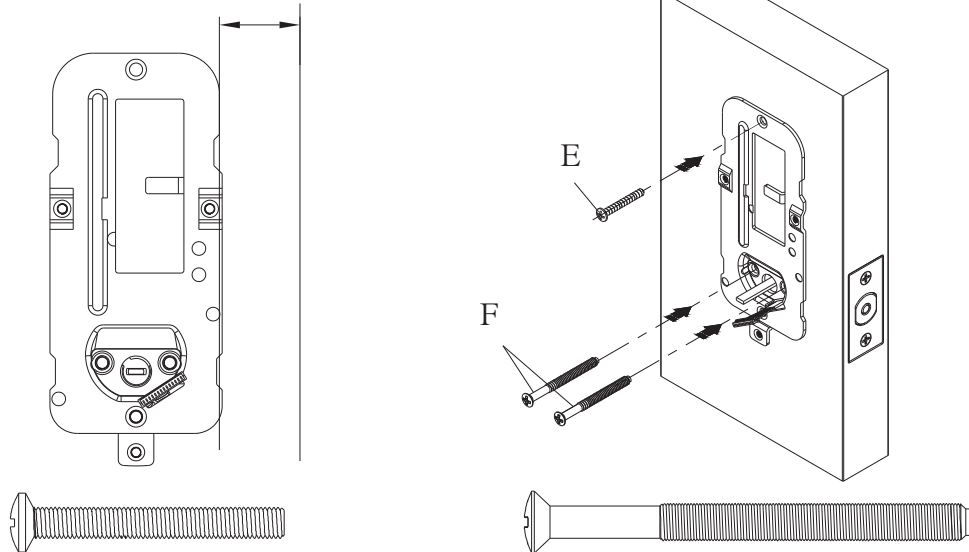
Electronic Pushbutton Locks

EL730SLR

INSTALLATION INSTRUCTIONS

7

Make sure the mounting plate is parallel with the edge of the door.



Fasten the mounting plate with 2-1/8" (54mm) screws*2 and 1-1/4" (32mm) screw*1.

Note: Screw (E) is an optional screw. We recommend using screw (E) for the stability of the lockset.

18

INSTALLATION INSTRUCTIONS

8 REMOVE THE DECORATIVE COVER

1. Hold on the lip of the decorative cover.



2. Put the thumbs on the thumbturn.



3. Remove the decorative cover by pushing the thumbturn.



19

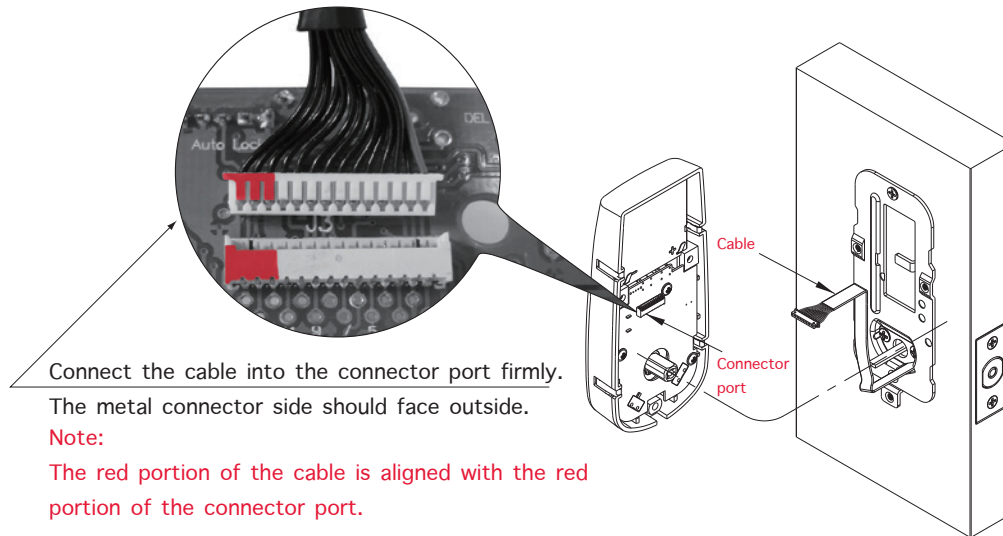


Electronic Pushbutton Locks

EL730SLR

INSTALLATION INSTRUCTIONS

9

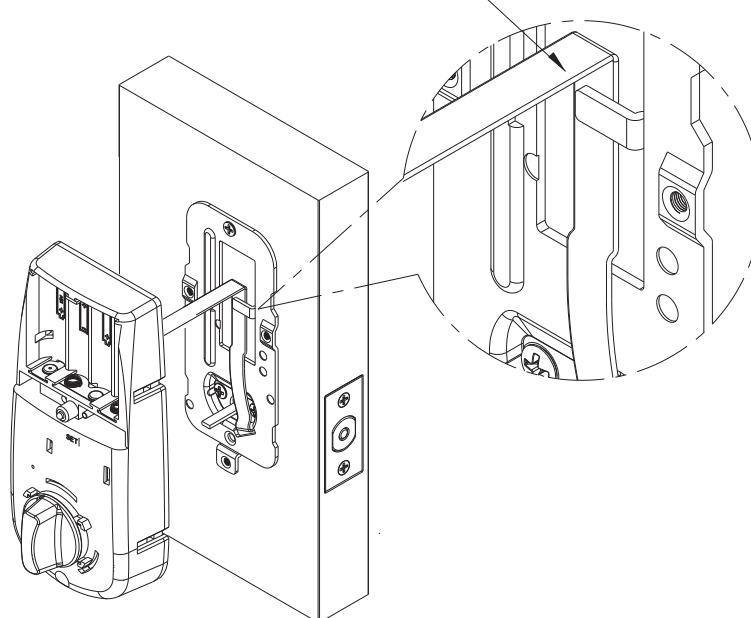


20

INSTALLATION INSTRUCTIONS

12

The cable must be arranged as shown in the diagram.



21



Electronic Pushbutton Locks

EL730SLR

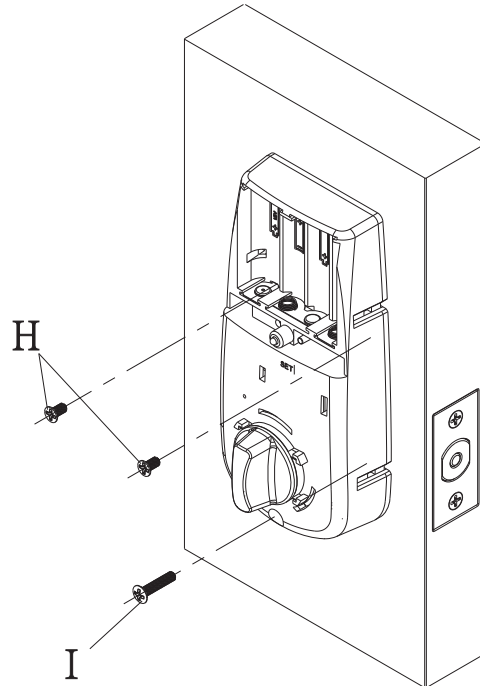
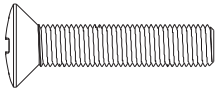
INSTALLATION INSTRUCTIONS

12

Insert 5/16" (7.8mm) screws (H) and tighten them.



Insert a 13/16" (20mm) screw (I) and tighten it.



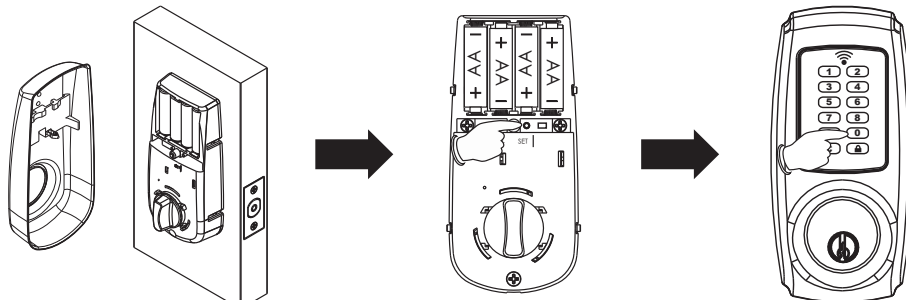
INSTALLATION INSTRUCTIONS

AUTOMATIC - BOLT DIRECTION DETERMINATION

Note:

After installing the lock on the door, do the bolt direction determination first and then restore it to the factory setting.

1. Press and hold [SET] button for over 2 seconds. The Red LED will light up and beep twice.
You are now under setup mode.
2. Enter 123456 (or current programming code) and then press button.
Enter [00] and press button. The Red LED will light up for 10 seconds. The lockset will have the bolt direction set.



23

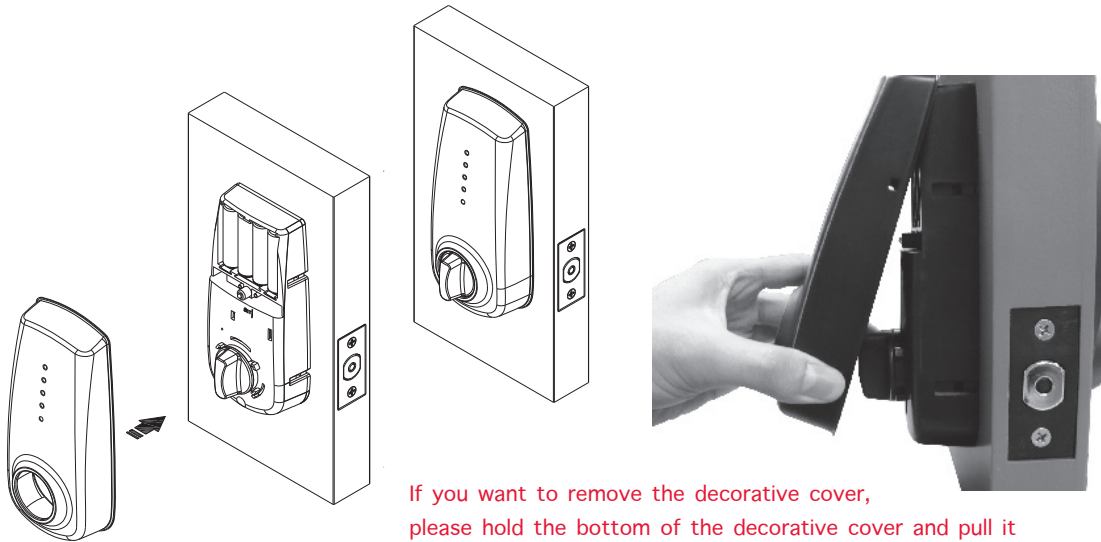


Electronic Pushbutton Locks

EL730SLR

INSTALLATION INSTRUCTIONS

We recommend to re-install the decorative cover after completing setup mode in page 25 to page 42.



If you want to remove the decorative cover,
please hold the bottom of the decorative cover and pull it
toward yourself.

24

SETUP MODE

HOW TO CHANGE PROGRAMMING CODE

Important:

The pre-set programming code is 1-2-3-4-5-6.

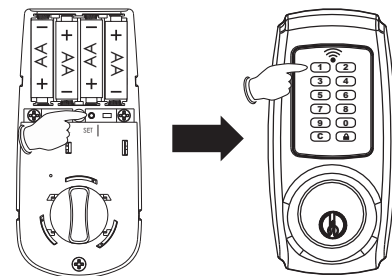
Please change the programming code before operating the lockset.

Steps are as follows:

1. Press and hold [SET] button for over 2 seconds. The Red LED will light up and beep twice.
You are now under setup mode.
2. Enter 123456 (or current programming code) and then press button .
Enter [10] and press button .
Enter new programming code (six digits) and press button .
The Red LED will light up for 10 seconds. The lockset will have the new programming code set.

Note:

1. The lockset will go back to the standby status if no button is pressed in 10 seconds after accessing setup mode.
2. If you enter new programming code in 10 seconds after accessing setup mode, the last programming code will be stored in the lockset.



25



Electronic Pushbutton Locks

EL730SLR

SETUP MODE

HOW TO ADD AN USER CODE

Steps are as follows:

1. Press and hold [SET] button for over 2 seconds. The Red LED will light up and beep twice.


You are now under setup mode.

2. Enter 123456 (or current programming code) and then press button .

Enter [20] and press button .

Enter new user code (four to six digits) and press button .

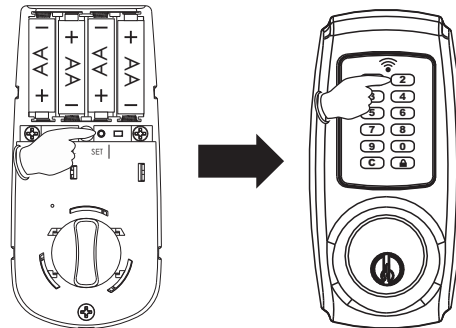
The Red LED will light up for 10 seconds. The lockset will have the new user code set.

(If a number of user codes are to be added at the same time, enter new user code and press , and repeat above step prior to the indicator light timing out 10 seconds after the last press of a keypad button.)

Note:

1. The lockset will go back to the standby status if no button is pressed in 10 seconds after accessing setup mode.

26



SETUP MODE

HOW TO ADD A PROXIMITY CARD (only available for Proximity Card Electronic Deadbolt)

Steps are as follows:

1. Press and hold [SET] button for over 2 seconds.

The Red LED will light up and beep twice. You are now under setup mode.

2. Enter 123456 (or current programming code) and then press button .

Enter [20] and press button . Touch the inductive zone with the card.

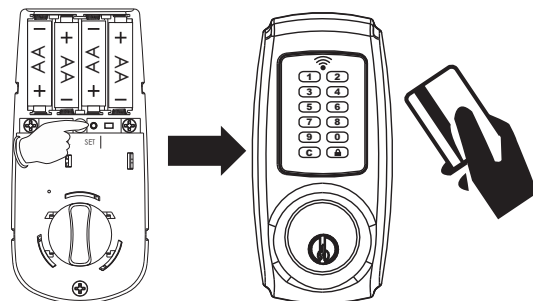
The Red LED will light up for 10 seconds. The lockset will have the new card set.

(If a number of proximity cards are to be added at the same time, use new card to touch the inductive zone, and repeat above step prior to the indicator light timing out 10 seconds after the last press of a keypad button.)

Note:

1. The lockset will go back to the standby status if no button is pressed in 10 seconds after accessing setup mode.
2. Please use or purchase proximity cards compatible with standard Mifare -13.56 MHz if you want to have more than one proximity card.
3. Proximity card capacity: 10 sets maximum.

27






Electronic Pushbutton Locks



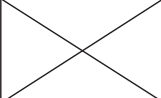
EL730SLR

SETUP MODE

HOW TO ADD A SINGLE-USE USER CODE / PROXIMITY CARD / REMOTE CONTROL

Steps are as follows:

1. Press and hold [SET] button for over 2 seconds. The Red LED will light up and beep twice.
You are now under setup mode.
2. Enter 123456 (or current programming code) and then press button .
3. We recommend to turn on auto-lock mode according to [page 38](#) before following the below steps to enable single-use user code/ remote control.

single-use	Follow the below steps.				
User code	Enter [21]	Press button 	Enter user codes (4 digits)	Press button 	User codes can be stored to 5 sets
Remote control			Press any button on the remote control		Remote controls can be stored to 5 sets
Proximity card			Touch the inductive zone		Proximity cards can be stored to 5 sets

29

SETUP MODE

Note:

1. The lockset will go back to the standby status if no button is pressed in 10 seconds after accessing setup mode.
2. Single-use user code capacity: 5 sets maximum.
3. Single-use remote control capacity: 5 sets maximum.
4. Single-use proximity card capacity: 5 sets maximum.
5. Single-entry user code/ single-entry user remote control/ single-entry proximity card is only allowed to work once and will become invalid after one-time use (entry).
6. Do not use your multiple-entry user code/ multiple-entry remote control/ multiple-entry proximity card to facilitate single-entry operation, or your user code/ remote control/ proximity card will become invalid after only one-time use (entry).

30







Electronic Pushbutton Locks

EL730SLR

SETUP MODE

HOW TO DELETE AN INDIVIDUAL EXISTING USER CODE

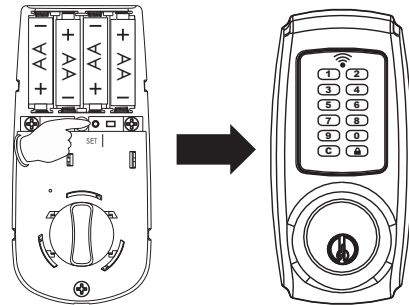
Steps are as follows:

1. Press and hold [SET] button for over 2 seconds. The Red LED will light up and beep twice.
You are now under setup mode.
2. Enter 123456 (or current programming code) and then press button .
Enter [30] and press button .
Enter existing user code (that you wish to delete) and press button .
The Red LED will light up for 10 seconds. The lockset will delete the existing user code that you do not want.
(If a number of user codes are to be deleted at the same time, enter each user code to be deleted and press  on the keypad, and repeat above step prior to the indicator light timing out 10 seconds after the last press of a keypad button.)

Note:

1. The lockset will go back to the standby status if no button is pressed in 10 seconds after accessing setup mode.

31





SETUP MODE

HOW TO DELETE AN INDIVIDUAL EXISTING PROXIMITY CARD

(only available for Proximity Card Electronic Deadbolt)

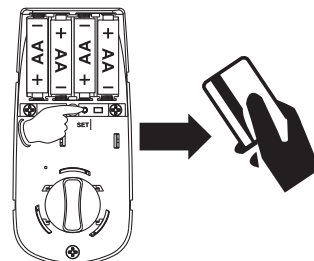
Steps are as follows:

1. Press and hold [SET] button for over 2 seconds. The Red LED will light up and beep twice.
You are now under setup mode.
2. Enter 123456 (or current programming code) and then press button .
Enter [30] and press button .
Put the card that you wish to delete to touch the inductive zone.
The Red LED will light up for 10 seconds. The lockset will delete the existing card that you do not want.
(If a number of cards are to be deleted at the same time, use every card to touch the inductive zone consecutively prior to the indicator light timing out 10 seconds after the last press of a keypad button.)

Note:

1. The lockset will go back to the standby status if no button is pressed in 10 seconds after accessing setup mode.
2. If any card is lost, for your safety, please delete all cards and re-add current cards excluding the lost one.

32





Electronic Pushbutton Locks

EL730SLR

SETUP MODE

HOW TO DELETE AN INDIVIDUAL EXISTING REMOTE CONTROL

(only available for Remote Control Electronic Deadbolt)


Steps are as follows:

1. Press and hold [SET] button for over 2 seconds.

The Red LED will light up and beep twice. You are now under setup mode.


2. Enter 123456 (or current programming code) and then press button .

Enter [30] and press button .

Press any button on the remote control (that you wish to delete) and press button .

The Red LED will light up for 10 seconds.

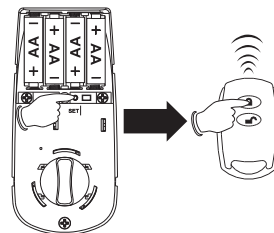
The lockset will delete the existing remote control that you do not want.

(If a number of remote controls are to be deleted at the same time, press any button of the remote control that you want to delete and press button  on the keypad, and repeat above step prior to the indicator light timing out 10 seconds after the last press of a keypad button.)

Note:

1. The lockset will go back to the standby status if no button is pressed in 10 seconds after accessing setup mode.
2. If any remote control is lost, for your safety, please delete all remote controls and re-add current remote controls excluding the lost one.

33



SETUP MODE

HOW TO DELETE ALL EXISTING USER CODES AT ONCE

Steps are as follows:

1. Press and hold [SET] button for over 2 seconds.

The Red LED will light up and beep twice. You are now under setup mode.

2. Enter 123456 (or current programming code) and then press button .

Enter [40] and press button .

Press and hold  button until a beep is heard.

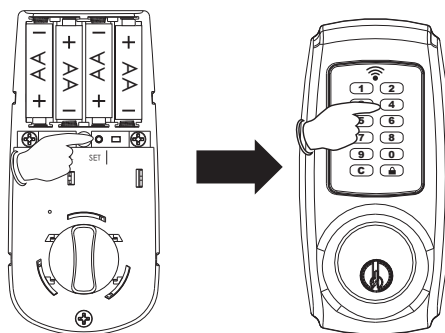
The Red LED will light up for 10 seconds.

The lockset will delete all existing user codes.

Note:

1. The lockset will go back to the standby status if no button is pressed in 10 seconds after accessing setup mode.

34





Electronic Pushbutton Locks

EL730SLR

SETUP MODE

HOW TO DELETE ALL EXISTING PROXIMITY CARDS / REMOTE CONTROLS AT ONCE

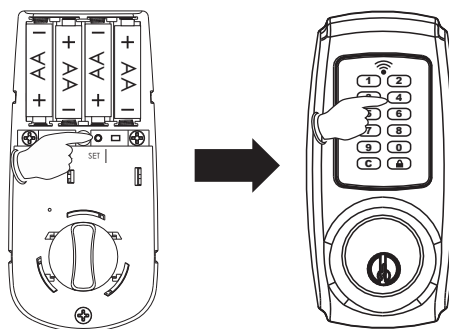
(only available for Proximity Card Electronic Deadbolt / Remote Control Electronic Deadbolt)

Steps are as follows:

1. Press and hold [SET] button for over 2 seconds.
The Red LED will light up and beep twice. You are now under setup mode.
2. Enter 123456 (or current programming code) and then press button .
Enter [41] and press button .
Press and hold until a beep is heard.
The Red LED will light up for 10 seconds.
The lockset will delete all existing cards and remote controls.

Note:

1. The lockset will go back to the standby status if no button is pressed in 10 seconds after accessing setup mode.
2. If any card / remote control is lost, for your safety, please delete all cards / remote controls and re-add current cards / remote controls excluding the lost one.



35

SETUP MODE

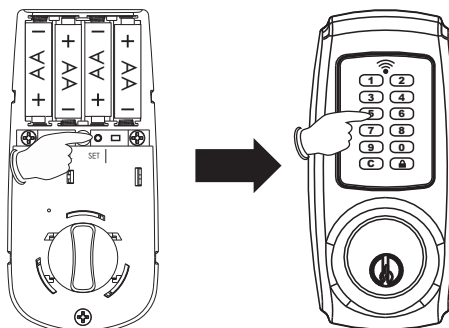
HOW TO DIABLE ALL EXISTING CODES/ CARDS/ REMOTE CONTROLS (VACATION MODE)

Steps are as follows:

1. Press and hold [SET] button for over 2 seconds.
The Red LED will light up and beep twice.
You are now under setup mode.
2. Enter 123456 (or current programming code) and then press button .
Enter [50] and press button .
3. Enter [0] and press button .
The Red LED will light up for 10 seconds. The lockset will turn on vacation mode.
4. Enter [1] and press button .
The Red LED will light up for 10 seconds. The lockset will turn off vacation mode.
(default vacation mode is off)

Note:

1. The lockset will go back to the standby status if no button is pressed in 10 seconds after accessing setup mode.
2. Vacation mode is used to disable all user codes at the keypad.
If a valid user code is entered while the lock is in vacation mode, the lock will not be unlocked. If you will be away from your home for a period of, it is a good idea to use vacation mode to prevent repeated access attempts.



36



Electronic Pushbutton Locks

EL730SLR

SETUP MODE

HOW TO DISABLE BUTTON SOUND (MUTE MODE)

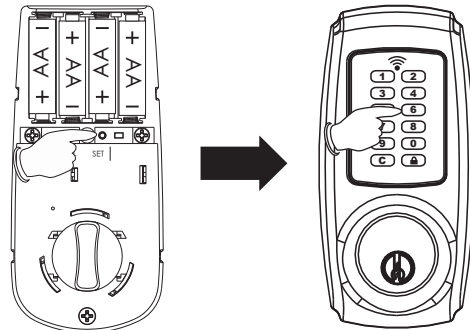
Steps are as follows:

1. Press and hold [SET] button for over 2 seconds.
The Red LED will light up and beep twice. You are now under setup mode.
2. Enter 123456 (or current programming code) and then press button .
Enter [60] and press button .
3. Enter [0] and press button .
The Red LED will light up for 10 seconds. The lockset will turn on mute mode.
4. Enter [1] and press button .
The Red LED will light up for 10 seconds. The lockset will turn off mute mode.
(default mute mode is off)

Note:

1. The lockset will go back to the standby status if no button is pressed in 10 seconds after accessing setup mode.

37



SETUP MODE

HOW TO ENABLE AUTO-LOCK MODE

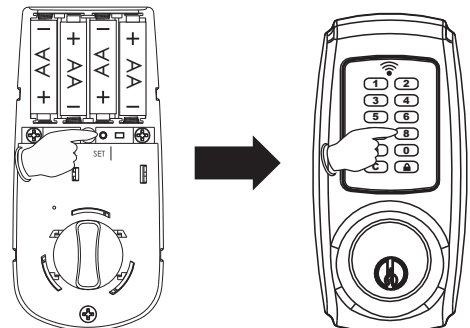
Steps are as follows:

1. Press and hold [SET] button for over 2 seconds.
The Red LED will light up and beep twice. You are now under setup mode.
2. Enter 123456 (or current programming code) and then press button .
Enter [80] and press button .
3. Enter [0] and press button .
The Red LED will light up for 10 seconds. The lockset will turn on auto-lock mode.
4. Enter [1] and press button .
The Red LED will light up for 10 seconds.
The lockset will turn off auto-lock mode. (default auto-lock mode is off)

Note:

1. The lockset will go back to the standby status if no button is pressed in 10 seconds after accessing setup mode.
2. The lockset will auto-lock in 10 seconds (default value) without flashing and beeping after unlocking if you turn on auto-lock mode.
3. The lockset can still be locked by pressing button manually even if you turn on auto-lock mode.

38





Electronic Pushbutton Locks

EL730SLR

SETUP MODE

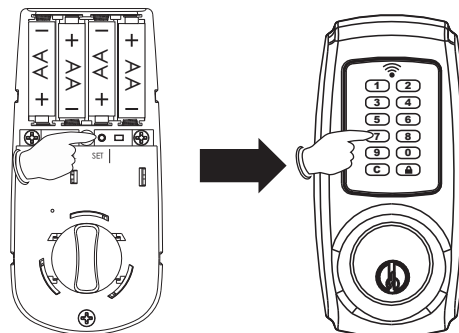
HOW TO SETUP AUTO-LOCK TIME DELAY

Steps are as follows:

1. Press and hold [SET] button for over 2 seconds.
The Red LED will light up and beep twice. You are now under setup mode.
2. Enter 123456 (or current programming code) and then press button .
Enter [70] and press button .
Enter the seconds for delay time of auto-locking (10 to 90) and press button .
The Red LED will light up for 10 seconds. The lockset will setup auto-lock time delay.

Note:

- 1.The lockset will go back to the standby status if no button is pressed in 10 seconds after accessing setup mode.
- 2.The lockset will flash and beep three times if the seconds for delay time of auto-locking is not within 10 to 90 seconds.
- 3.Default auto-lock time delay is 10 seconds.



39

SETUP MODE

HOW TO ENABLE DOUBLE AUTHORIZATION MODE

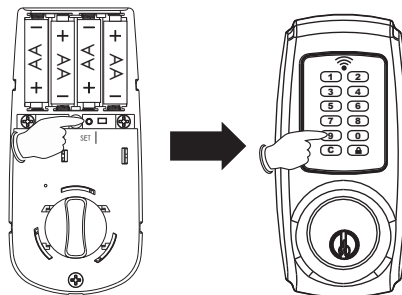
(only available for Proximity Card Electronic Deadbolt/ Remote Control Electronic Deadbolt)

Steps are as follows:

1. Press and hold [SET] button for over 2 seconds. The Red LED will light up and beep twice.
You are now under setup mode.
2. Enter 123456 (or current programming code) and then press button .
Enter [99] and press button .
3. Enter [0] and press button .
The Red LED will light up for 10 seconds. The lockset will turn on double authorization mode.
(When the double authorization mode is turned on, both user code and card, or both user code and remote control, must be authenticated to unlock the lockset)
4. Enter [1] and press button .
The Red LED will light up for 10 seconds. The lockset will turn off double authorization mode. (default double authorization mode is off)

Note:

- 1.The lockset will go back to the standby status if no button is pressed in 10 seconds after accessing setup mode.
- 2.Please make sure that both user code and card, or both user code and remote control, are stored in the lockset before you turn on double authorization mode.



40



Electronic Pushbutton Locks

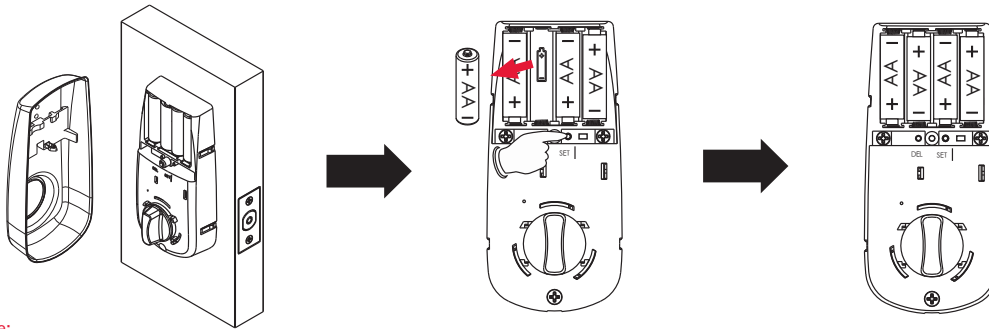
EL730SLR

SETUP MODE

HOW TO RESTORE FACTORY SETTING

Steps are as follows:

1. Remove one battery from the battery pack.
2. Press and hold [SET] button and put the battery back. Keep holding [SET] button until a long beep and a short beep are heard. All functions will be restored back to factory setting.



Note:

For your safety, restore factory setting after installing the lock on the door.

All existing user codes/ cards/ remote controls will be deleted.

Lock will be restored to the pre-set programming code of 1-2-3-4-5-6.

Please change the programming code and add a new user code immediately before operating the lockset.

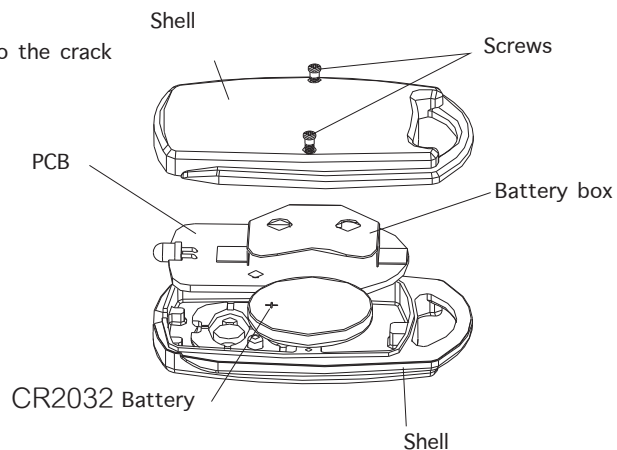
41

SETUP MODE

HOW TO REPLACE A BATTERY OF REMOTE CONTROL

Steps are as follows:

1. Loose two screws before opening the bottom shell.
2. Take the PCB out.
3. Push the battery out by inserting the tool into the crack between the PCB and the electrode terminal.
4. Push into the new battery.
5. Replace the PCB.
6. Place the bottom shell back and tighten the screws.



42



Electronic Pushbutton Locks

EL730SLR

OPERATION MODE

HOW TO LOCK manually

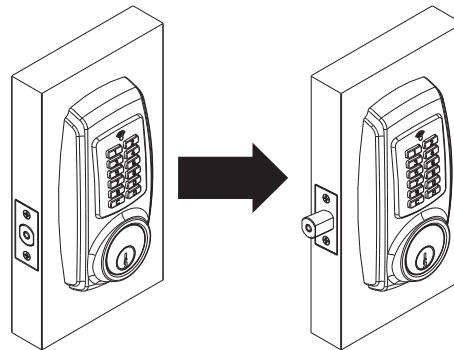
Keypad: Press button  to lock the door.

Remote control: Press lock button to lock the door as shown.

(only available for Remote Control Electronic Deadbolt)

HOW TO LOCK automatically

1. Auto-lock mode should be turned on and auto-lock time delay should be also set up.
2. The lockset will be auto-locked in few seconds (default 10 seconds or the time you entered) after unlocking by using codes, card, or remote control.

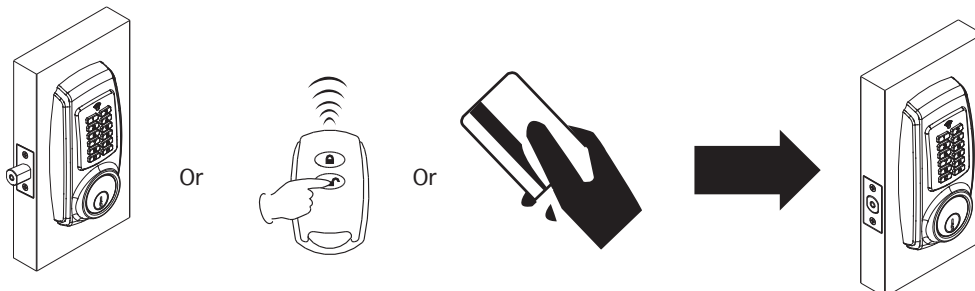


43




OPERATION MODE

HOW TO UNLOCK

1. Enter a valid code, touch the inductive zone with the card, or press unlock button on the remote control to unlock the lockset.
2. When the double authorization mode is turned on, both user code and card, or both user code and remote control, must be authenticated to unlock the lockset.



Note:

- 1.If you cannot unlock the lockset by using card, especially the lockset is mounted outside or under the sun, please wakeup the lockset by pressing button  on the keypad first, then unlock the lockset by using card.
- 2.When you enter codes, and the keypad backlight will also be activated automatically under low light environment.
- 3.Please press button  to clear previous codes and re-enter codes if the previous codes are incorrect.
- 4.If you do not press button  to clear previous incorrect codes, the red LED will light up and you have to wait until the red LED lights off, then the lockset is allowed to re-enter codes.

44



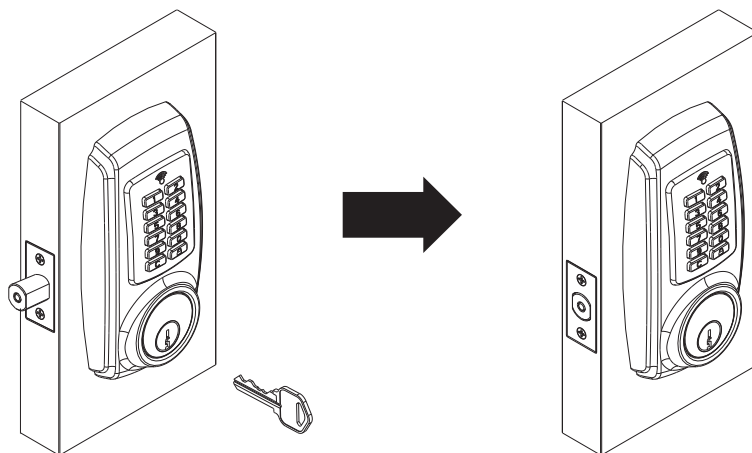
Electronic Pushbutton Locks

EL730SLR

OPERATION MODE

SAFE MODE

1. The keypad will be automatically deactivated for 1 minute after 4 wrong attempts.
2. Wrong attempts will not be counted when you press button **C** to clear previous incorrect codes before the red LED lights up.
2. The deadbolt can be locked or unlocked by a valid traditional key under security.



45

TROUBLESHOOTING GUIDELINE

QUESTIONS	ANSWERS
The lockset did not operate correctly after installation.	<ol style="list-style-type: none"> 1. Check center of strike hole for alignment with latch hole on the door to ensure free movement for the deadbolt. 2. Make sure the tailpiece is properly inserted (in the horizontal position) in the latch. 3. Do [AUTOMATIC -BOLT DIRECTION DETERMINATION].
Feel a bump while turning of the motor?	<ol style="list-style-type: none"> 1. Please rotate the thumbturn back and forth a few times.
Feel a bump while turning the thumbturn or the key?	<ol style="list-style-type: none"> 1. Do not lock (or unlock) the door consecutively. This will cause a bump. 2. If feeling a bump, press L button while the door is unlocked to allow the motor to reposition.

46



Electronic Pushbutton Locks

EL730SLR

TROUBLESHOOTING GUIDELINE

QUESTIONS	ANSWERS
Keypad does not respond at all.	<ol style="list-style-type: none">1. Check to see if the batteries are well-installed.2. Check to see if the Yellow LED light is flashing or not. It means "low battery" if the light keeps flashing.3. Make sure the cable is well-connected to the port.
Programming code cannot be changed ?	<ol style="list-style-type: none">1. Please complete the "HOW TO CHANGE PROGRAMMING CODE" process by inputting codes within 10 seconds.2. Please make sure you have entered the new programming code correctly or go back to the factory setting and reset the programming code again.
I cannot delete all user codes.	<ol style="list-style-type: none">1. Make sure all code inputting processes should be completed within 10 seconds.2. Make sure you have entered the correct programming code.3. Ⓢ button should be held over 3 seconds.

47

TROUBLESHOOTING GUIDELINE

QUESTIONS	ANSWERS
I cannot add a new user code.	<ol style="list-style-type: none">1. Make sure all code inputting processes should be completed within 10 seconds.2. Make sure you have entered the correct programming code.3. The new user code will not be accepted if 10 sets of user codes are already stored in the memory.
What happens if the lockset is not able to unlock by the keypad?	<ol style="list-style-type: none">1. Make sure you have entered the correct user code.2. Check to see if the Yellow LED light is flashing or not. It means "low battery" if the light keeps flashing.3. Please make sure the position of strike plate is installed correctly if you see the latch is jammed.
I am unable to reset the lockset.	<ol style="list-style-type: none">1. Please refer to "HOW TO RESTORE FACTORY SETTING" section and make sure all steps are followed correctly.2. Check to see if the Yellow LED light is flashing or not. It means "low battery" if the light keeps flashing.


48



Electronic Pushbutton Locks


EL730SLR

TROUBLESHOOTING GUIDELINE

QUESTIONS	ANSWERS
Red LED light is still on after setting is completed?	1. Please make sure if [SET] button is jammed. 2. Please re-install the batteries.
"Auto lock" does not function.	1. Please make sure turn on auto-lock mode. 2. Check to see if the Yellow LED light is flashing or not. It means "low battery" if the light keeps flashing.
Yellow LED light keeps flashing.	The battery is getting low, please reinstall all new batteries for best performance (AA size Alkaline batteries are only allowed).
What should I do if I input the wrong code?	1. Press button  once and continue to input code according to regular procedures.
How to operate this lockset under a low-light environment?	1. Press any button on the keypad to initiate LED backlight.
The card or the remote control is lost.	1. For your safety, please delete all cards/ remote controls and re-add current cards/ remote controls excluding the lost one.

49

TROUBLESHOOTING GUIDELINE

QUESTIONS	ANSWERS
Need more remote controls.	1. Please purchase the remote control (produced by our company) from an authorized retailer. Other remote controls maybe not compatible with this lockset.
Need more proximity cards.	1. Proximity card we offer is the latest Radio Frequency Identification (RFID) technology, compatible with standard Mifare -13.56 MHz. 2. You can use any card compatible with standard Mifare -13.56 MHz or purchase new cards from an authorized retailer.
What should I do if the lockset cannot be unlocked by using card?	1. Make sure this card is stored in the lockset. 2. Please press button  first then use card to unlock. 3. Please touch the inductive zone with the card to unlock.

If the lock appears to be damaged or does not function properly, please contact your local provider for more help.

50



Electronic Pushbutton Locks

EL730SLR

DECLARATIONS AND SAFETY STATEMENTS

Federal Communications Commission Statement

This device complies with Part 15 of the FCC. Operation is subject to the following two conditions:

- (1) this device may not cause harmful interference, and
- (2) this device must accept any interference received, including interference that may cause undesired operation.

Changes or modifications not expressly approved by the party responsible for compliance could void the user's authority to operate the equipment.

NOTE: This equipment has been tested and found to comply with the limits for a Class B digital device, pursuant to part 15 of the FCC Rules. These limits are designed to provide reasonable protection against harmful interference in a residential installation. This equipment generates, uses and can radiate radio frequency energy and, if not installed and used in accordance with the instructions, may cause harmful interference to radio communications. However, there is no guarantee that interference will not occur in a particular installation. If this equipment does cause harmful interference to radio or television reception, which can be determined by turning the equipment off and on, the user is encouraged to try to correct the interference by one or more of the following measures:

- Reorient or relocate the receiving antenna.
- Increase the separation between the equipment and receiver.
- Connect the equipment into an outlet on a circuit different from that to which the receiver is connected.
- Consult the dealer or an experienced radio/TV technician for help.

IC Regulations

This Class B digital apparatus complies with Canadian ICES-003 .

Cet appareil numérique de la classe B est conforme à la norme NMB-003 du Canada.

This device complies with Industry Canada licence-exempt RSS-210 standard. Operation is subject to the following two conditions:

- (1) this device may not cause harmful interference, and (2) this device must accept any interference received, including interference that may cause undesired operation of the device.

51

INFORMATION PAGE

SECURITY INSTRUCTION

1. Do not share the programming code with anyone else.
2. Keep a written copy of all valid user codes in a safe place.
(You may use the table below to record your information)
3. The memory capacity for user codes is 10 sets.
4. It is STRONGLY recommended changing all codes if any security information in the table is lost.

Programming code

Name	User code	Name	User code

52